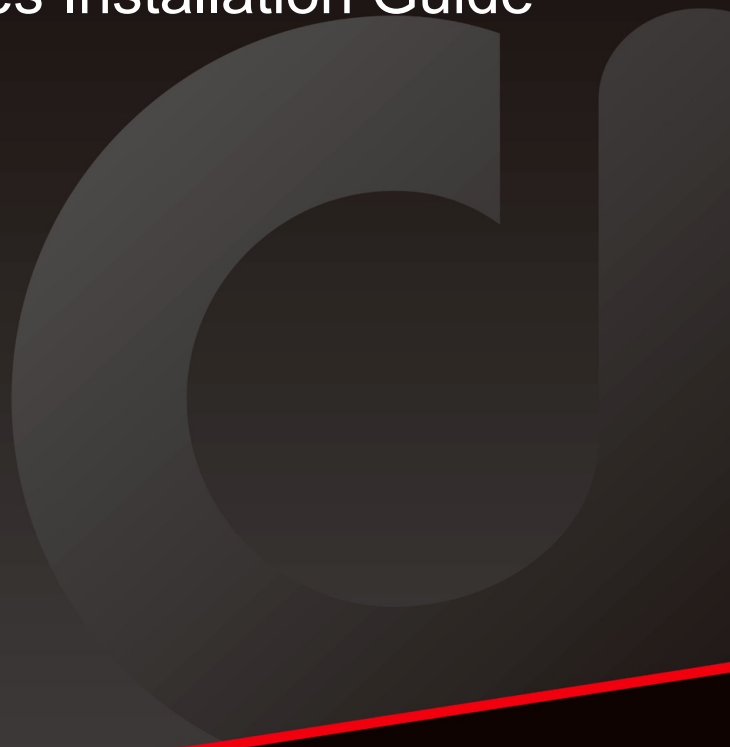


# AddGame A-Series Installation Guide for Sony PS5



## **AddGame A-Series** **Installation** **Guide for PS5**

### Introduction

Important Notice

Required Tools &  
Prepare

Installation Process

Troubleshooting tips



## Introduction

addGame SSD are all high-Performance M.2 NVMe SSD. They feature 3D Fin-Array heat sink which can reduce temperatures in PS5. It allow the addGame M.2 SSD to maximize its performance and improve stability throughout its lifespan. gives heavy gamers and hardware enthusiasts an opportunity to build the “Legendary” system.

Before continuing with installation process, please review the warranty policy and instructions provided by your PS5 to ensure your follow proper procedures to install your SSD.

## **AddGame A- Series Installation Guide for PS5**

Introduction

[Important Notice](#)

Required Tools &  
Prepare

Installation Process

Troubleshooting tips

### Important Notice

1. To prevent your SSD or PS5 console from damage by static electricity, before installation, please touch a metal grounded object to remove any static electricity from your body.
2. Please do not use this product in a wet environment. Make sure that you are working in static-safe environment.
3. Do not grab packages. Hold only the edged of the SSD.
4. Please do not disassemble or reassemble the heatsink. If the product has been disassembled or damaged by user, all warranties will be void.
5. Please review your Sony PS5 owner's manual to ensure your follow proper procedures to install your SSD.
6. After hardware installation, please update with the latest system software. (After version 21.02-04.00.00) for PS5 consoles.

## **AddGame A-Series Installation Guide for PS5**

Introduction

Important Notice

[Required Tools &  
Prepare](#)

Installation Process

Troubleshooting tips

## Required Tools & Prepare

- 1, AddGame A-Series SSD and your PS5 Station System
2. A Standard cross-head screwdriver
3. PS5 System User Manual



**AddGame A-  
Series  
Installation  
Guide for PS5**

Introduction

Important Notice

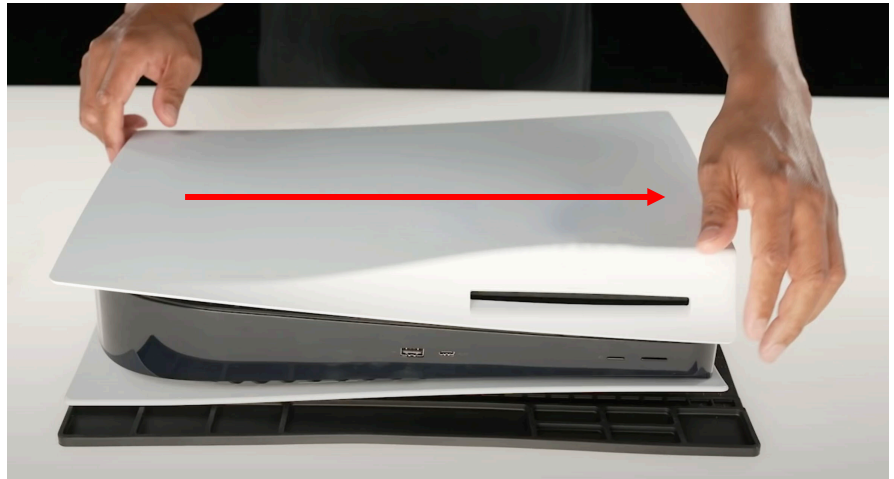
Required Tools &  
Prepare

[Installation Process](#)

Troubleshooting tips

## Installation Process

1. Turn off your PS5 console and remove all cables and devices from your PS5 console.
2. Place your PS5 console on a flat surface with a protective covering and open the case.



## AddGame A-Series Installation Guide for PS5

Introduction

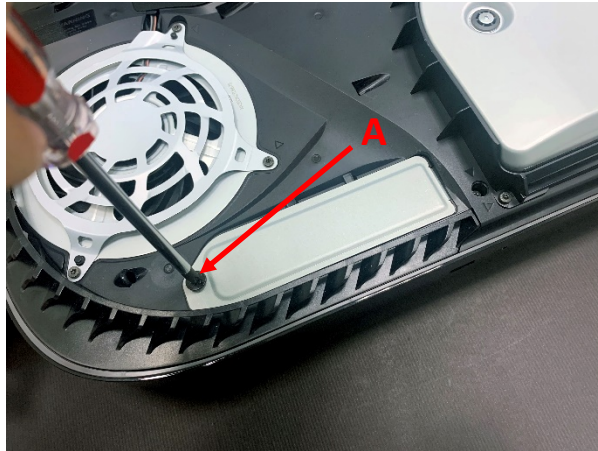
Important Notice

Required Tools &  
Prepare

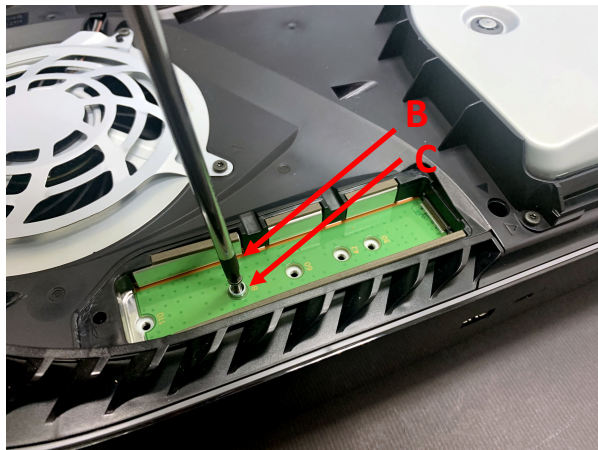
[Installation Process](#)

Troubleshooting tips

3. Remove the screw from the expansion slot cover (A) and then remove the cover.



4. Remove the screw (B). Move the spacer (C) to the groove corresponding to the size of your AddGame A-Series SSD.



## **AddGame A-Series Installation Guide for PS5**

Introduction

Important Notice

Required Tools &  
Prepare

[Installation Process](#)

Troubleshooting tips

5. Hold the edge of your M.2 SSD, align it with the notch on the expansion connector, and diagonally upwards insert it firmly.



Please Make sure the SSD is firmly inserted all the way into the expansion connector. If not, it may cause damage to your PS5 console.

**AddGame A-  
Series**  
**Installation**  
**Guide for PS5**

Introduction

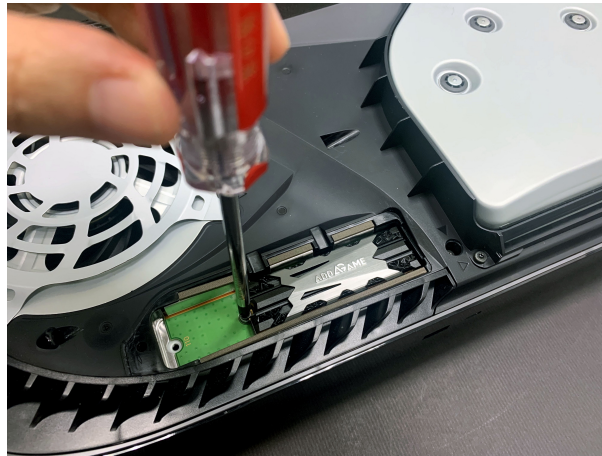
Important Notice

Required Tools &  
Prepare

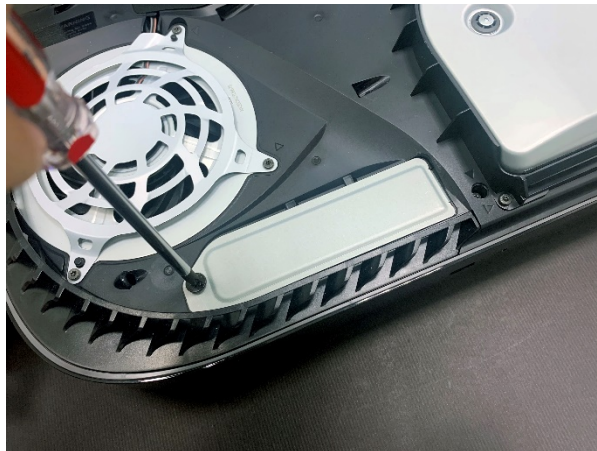
[Installation Process](#)

Troubleshooting tips

6. Tilt your SSD down and fasten the screw (B) with spacer (C) together.



7. Attach the expansion slot cover and fasten the screw (A).





## AddGame A-Series Installation Guide for PS5

Introduction

Important Notice

Required Tools &  
Prepare

Installation Process

Troubleshooting tips

8. Replace the cover by positioning it slightly away (about 2 cm or 3/4 inch) from the top edge and sliding it back into place. You'll hear a click when the cover is secured.
9. Connect cables and power adapter. Turn on the Power.
10. When your PS5 console turns on, the formatting guide appears. Follow the on-screen instructions.
11. Press the "PS Button" and then you can select and format your M.2 SSD.


### M.2 SSD Storage

To use your M.2 SSD, you need to format it.

When you format your M.2 SSD, all data on it will be deleted.

If you want to continue using your PS5 without formatting your M.2 SSD, turn off your PS5 and then remove your M.2 SSD.

Note that saved data, screenshots and video clips can't be saved in M.2 SSD storage.

Press the  button to use the controller.

Don't Format and Turn Off PS5

Format M.2 SSD

## AddGame A-Series Installation Guide for PS5

Introduction

Important Notice

Required Tools &  
Prepare

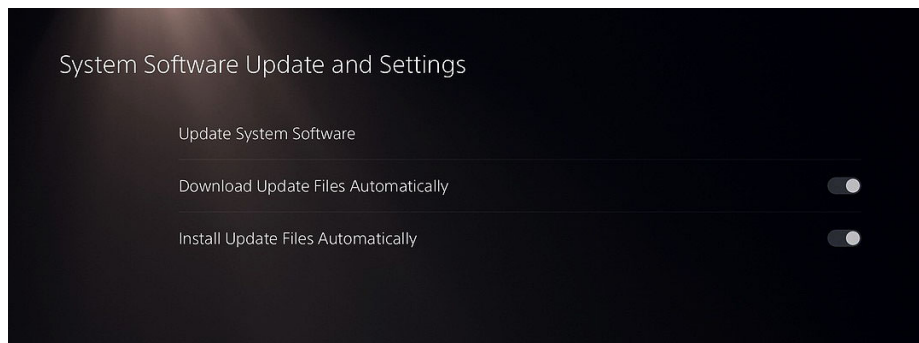
Installation Process

[Troubleshooting tips](#)

## Troubleshooting tips

If your PS5 does not detect or recognize your AddGame A-series SSD, please check these things first.

1. Please make sure you fully plugged it hard to the expansion connector
2. Please check if your PS5 with the latest firmware
  - Please make sure your software have been updated to the latest version ([system software version 21.02-04 or higher](#)).
  - You can go to Settings > System > System Software > System Software Update and Settings > Update System Software.



## **HEADQUARTER**

6F., No. 300, Ruiguang Rd., Neihu Dist.,  
Taipei City 114, Taiwan (R.O.C.)

## **CONTACT INFORMATION**

TEL : +886-2-8797 3116  
FAX : +886-2-8797 3522